

FOR INTERNAL TRAINING PURPOSES ONLY



P A R K E A S T P L A C E

ALVEO

BGC, TAGUIG CITY

BONIFACIO GLOBAL CITY

THE FASTEST GROWING DISTRICT IN METRO MANILA

FOR INTERNAL TRAINING PURPOSES ONLY

ALVEO PARK EAST PLACE

BONIFACIO GLOBAL CITY

HOME OF PASSIONATE MINDS



FOR INTERNAL TRAINING PURPOSES ONLY

FOR INTERNAL TRAINING PURPOSES ONLY

PARK EAST PLACE

PRIME CENTRAL LIVING IN BGC'S MAIN AVENUE

PRESTIGIOUS BGC ADDRESS
IN A REVITALIZED NEIGHBORHOOD

REFINED RESIDENTIAL SETTING

RARE INVESTMENT OPPORTUNITY

LOCATION

Bonifacio Global City

1st class highly urbanized city in Metro Manila

BGC forms part of the triumvirate of highly connected and progressive business districts: Makati, BGC, Arca.

Fast becoming a corporate address of choice, Bonifacio Global City is a master-planned community of bustling financial and commercial districts with unmatched accessibility

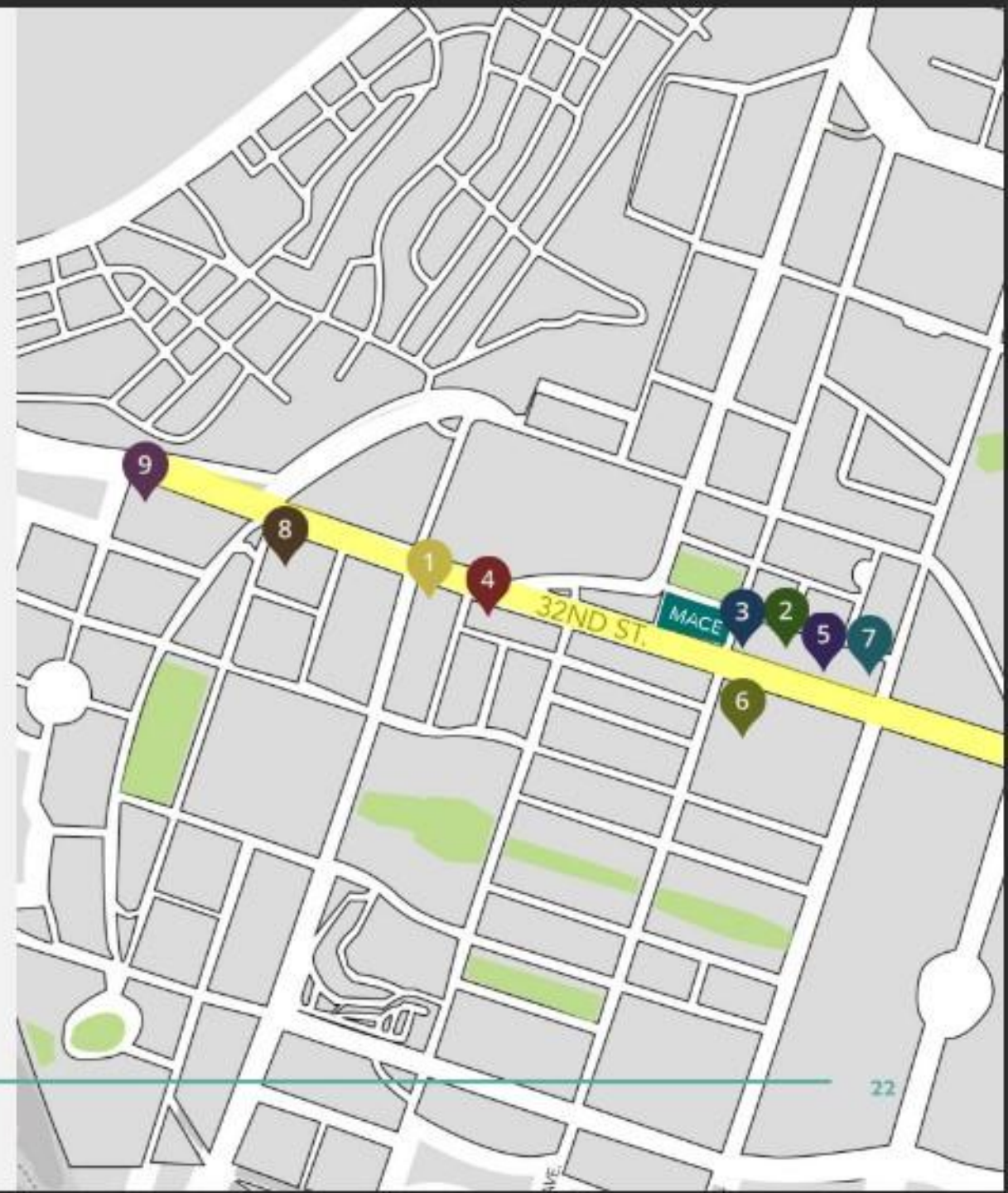


LIVING IN A REVITALIZED NEIGHBORHOOD

32nd Street Corporate Office Row

Housing competitive companies
that match your drive for success

- 1 THE GLOBE TOWER
- 2 ECO PRIME
- 3 MENARCO
- 4 ECO TOWER
- 5 IBM ONE WORLD PLACE
- 6 ALVEO PARK TRIANGLE TOWER
- 7 PARK TRIANGLE CORPORATE PLAZA
- 8 FORT LEGEND TOWER
- 9 BONIFACIO STOPOVER CORPORATE CENTER



ALVEO PARK EAST PLACE

FOR INTERNAL TRAINING PURPOSES ONLY



THE GLOBE TOWER



ECO TOWER



ECO PRIME



MENARCO



IBM ONE WORLD PLACE



ALVEO PARK TRIANGLE TOWER



PARK TRIANGLE CORPORATE PLAZA



FORT LEGEND TOWER



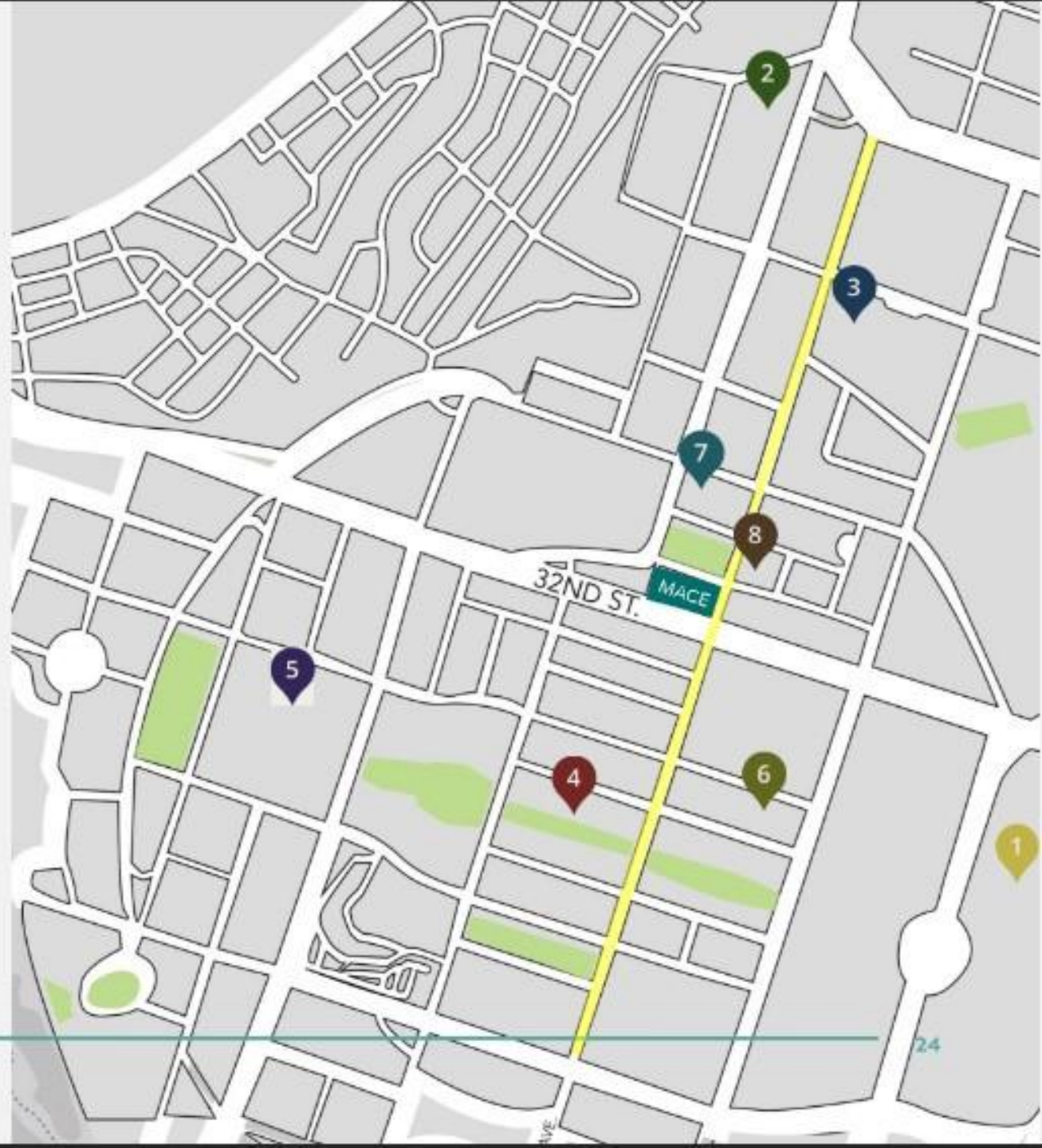
BONIFACIO STOPOVER CORPORATE CENTER

LIVING IN A REVITALIZED NEIGHBORHOOD

9th Avenue Retail and Lifestyle Row

Featuring vibrant lifestyle destinations

- 1 MARKET! MARKET!
- 2 MITSUKOSHI BGC
- 3 UPTOWN MALL
- 4 BONIFACIO HIGH STREET
- 5 ONE BONIFACIO HIGH STREET
- 6 SEDA BGC
- 7 GRAND HYATT MANILA
- 8 MANILA PADEL CLUB



FOR INTERNAL TRAINING PURPOSES ONLY



UPTOWN MALL



MARKET MARKET



SEDA BGC



MITSUBISHI BGC



MANILA PADEL CLUB



GRAND HYATT BGC



BONIFACIO HIGH STREET



ONE BONIFACIO HIGH STREET

Parks and Open Spaces

Features playgrounds and art installations where communities in BGC meet.

- 1 BGC TURF
- 2 TRACK 30TH
- 3 TERRA PARK 28TH STREET
- 4 HIGH STREET
- 5 BURGOS CIRCLE PARK





BGC TURF



TRACK 30TH



TERRA PARK 28TH



BURGOS CIRCLE PARK



BONIFACIO HIGH STREET

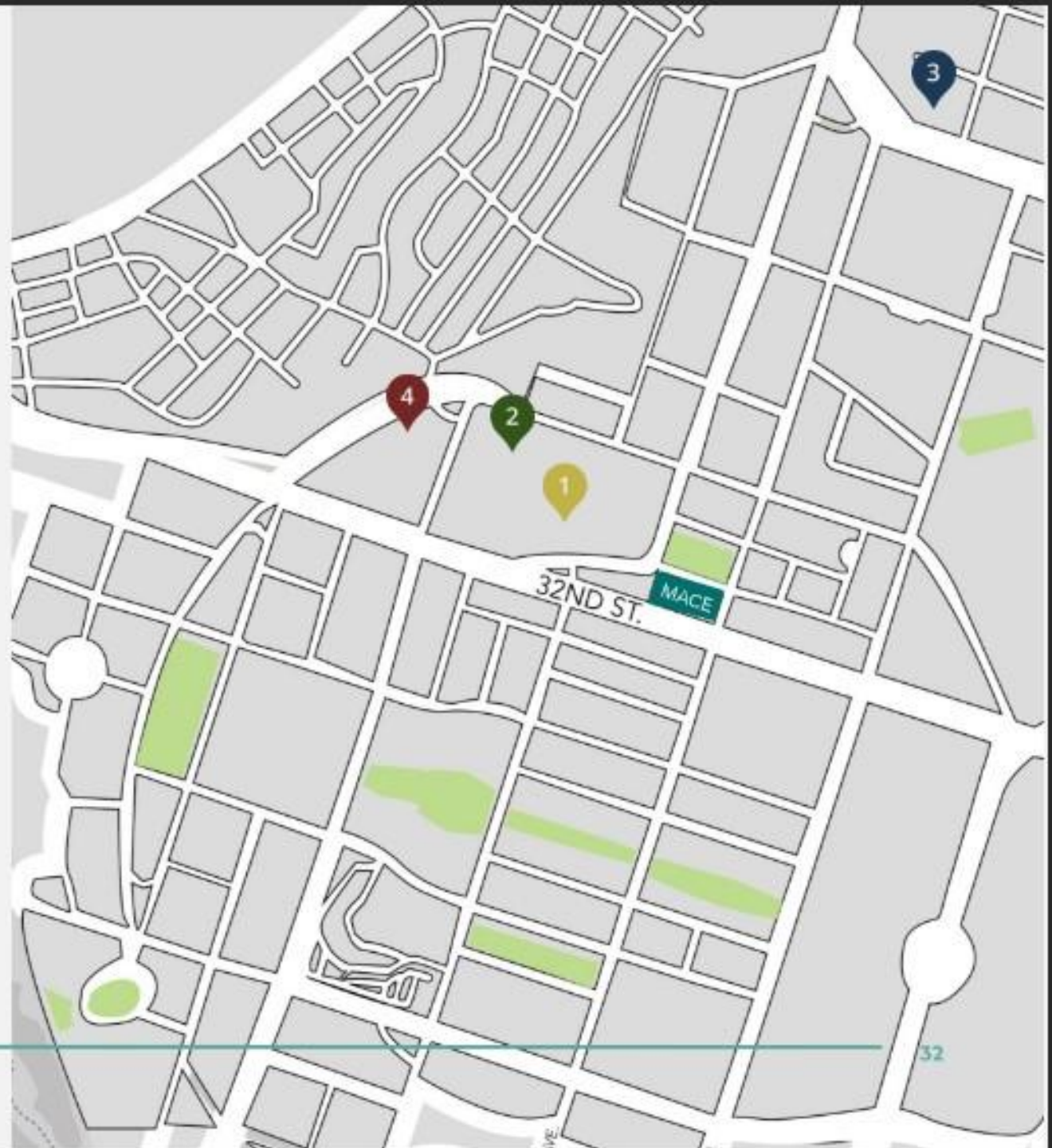
LIVING IN A REVITALIZED NEIGHBORHOOD

Medical, Religious Institutions, and Home Resources

Closer to what's essential

KEY AREAS

- 1 MC HOME DEPOT
- 2 S&R MEMBERSHIP SHOPPING
- 3 ST. MICHAEL THE ARCHANGEL PARISH
- 4 ST. LUKE'S MEDICAL CENTER





MC HOME DEPOT



S&R BGC



ST. LUKE'S MEDICAL CENTER



ST. MICHAEL THE ARCHANGEL PARISH

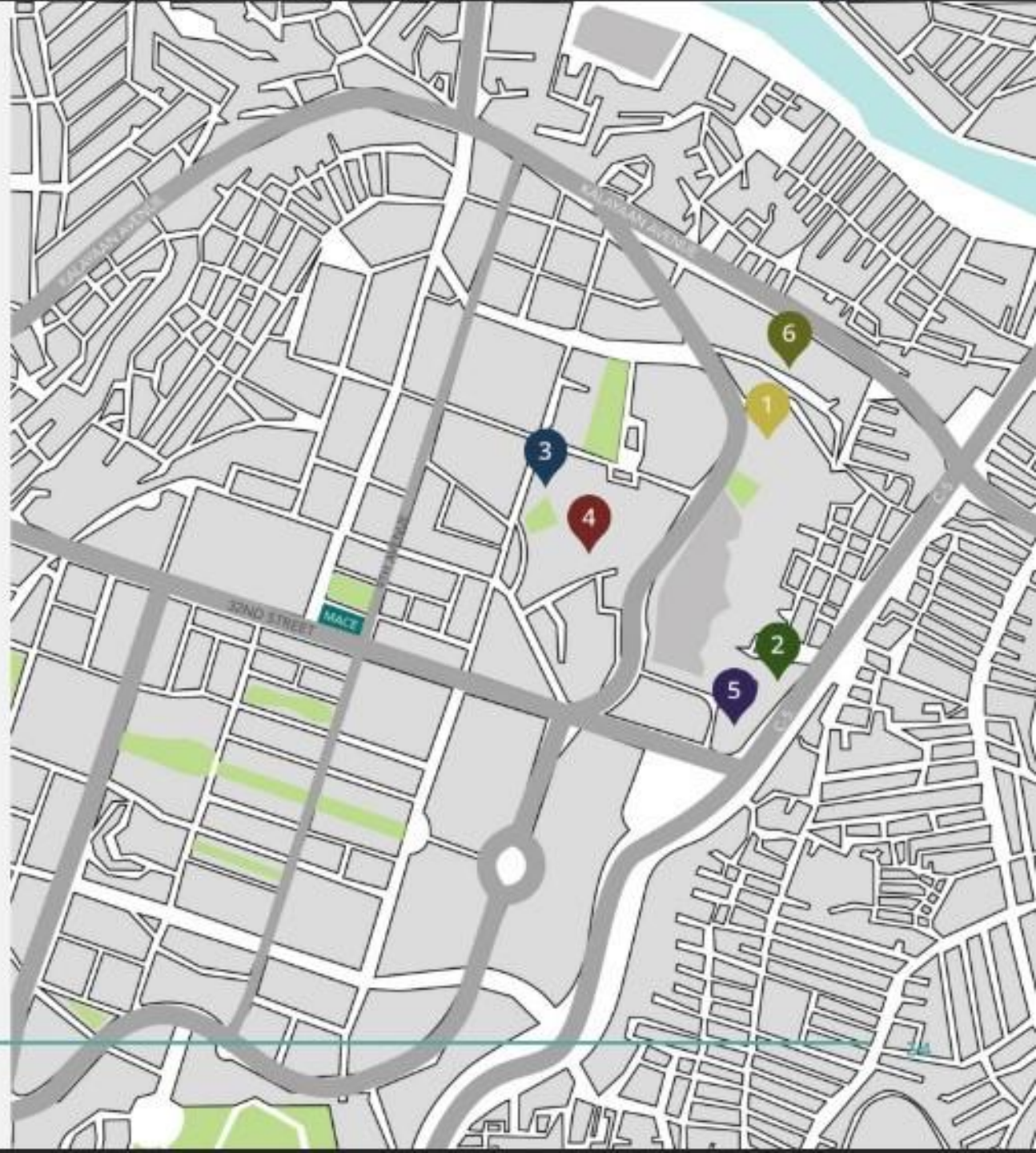
LIVING IN A REVITALIZED NEIGHBORHOOD

Educational Institutions

Equip the youth with the right tools

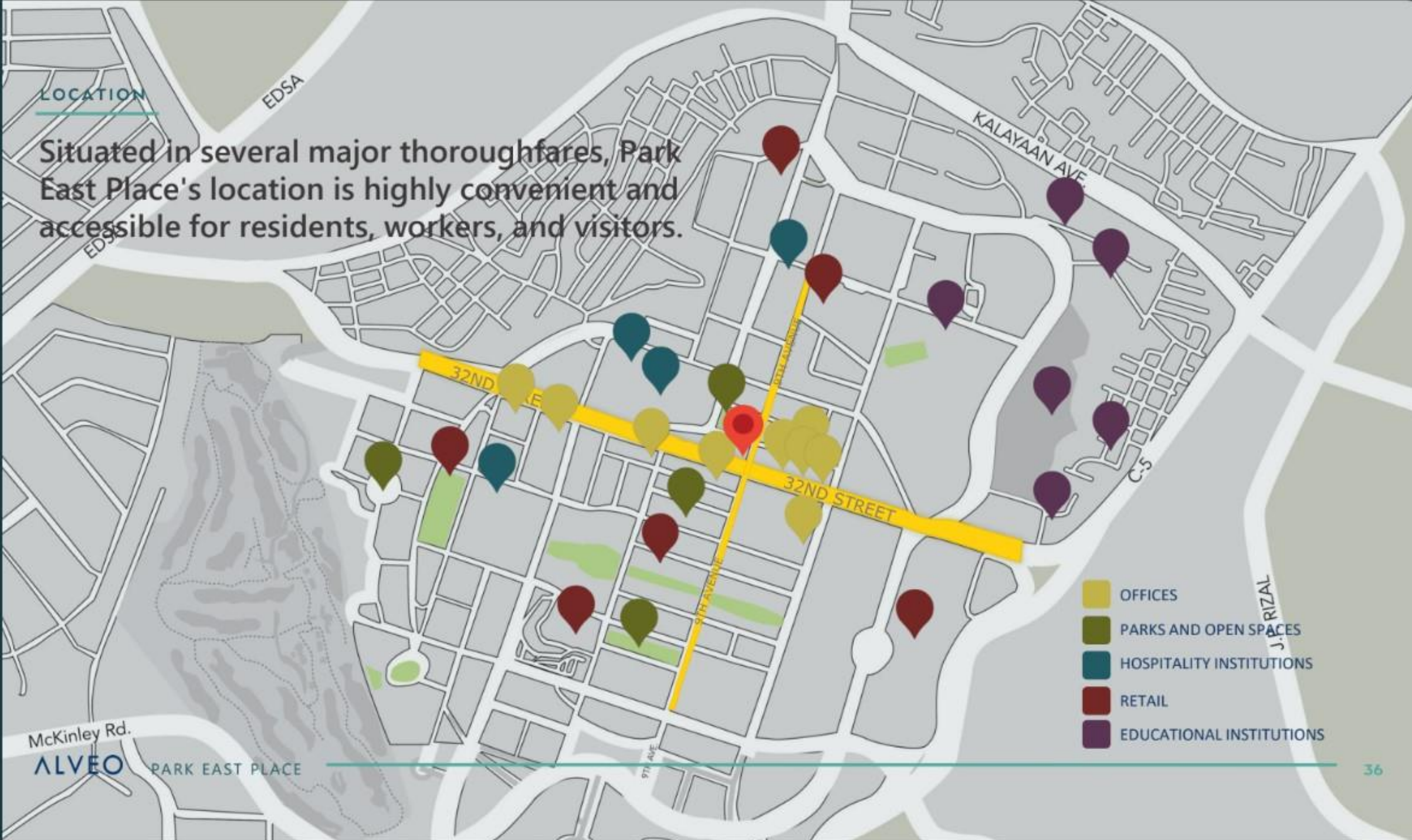
KEY AREAS

- 1 DE LA SALLE UNIVERSITY
- 2 UNIVERSITY OF THE PHILIPPINES BGC
- 3 BRITISH SCHOOL MANILA
- 4 INTERNATIONAL SCHOOL MANILA
- 5 TRESTON INTERNATIONAL COLLEGE
- 6 EVEREST ACADEMY



LOCATION

Situated in several major thoroughfares, Park East Place's location is highly convenient and accessible for residents, workers, and visitors.



FOR INTERNAL TRAINING PURPOSES ONLY

PARK EAST PLACE

PRIME CENTRAL LIVING IN BGC'S MAIN AVENUE

PRESTIGIOUS BGC ADDRESS
IN A REVITALIZED NEIGHBORHOOD

REFINED RESIDENTIAL SETTING

RARE INVESTMENT OPPORTUNITY

REFINED RESIDENTIAL SETTING

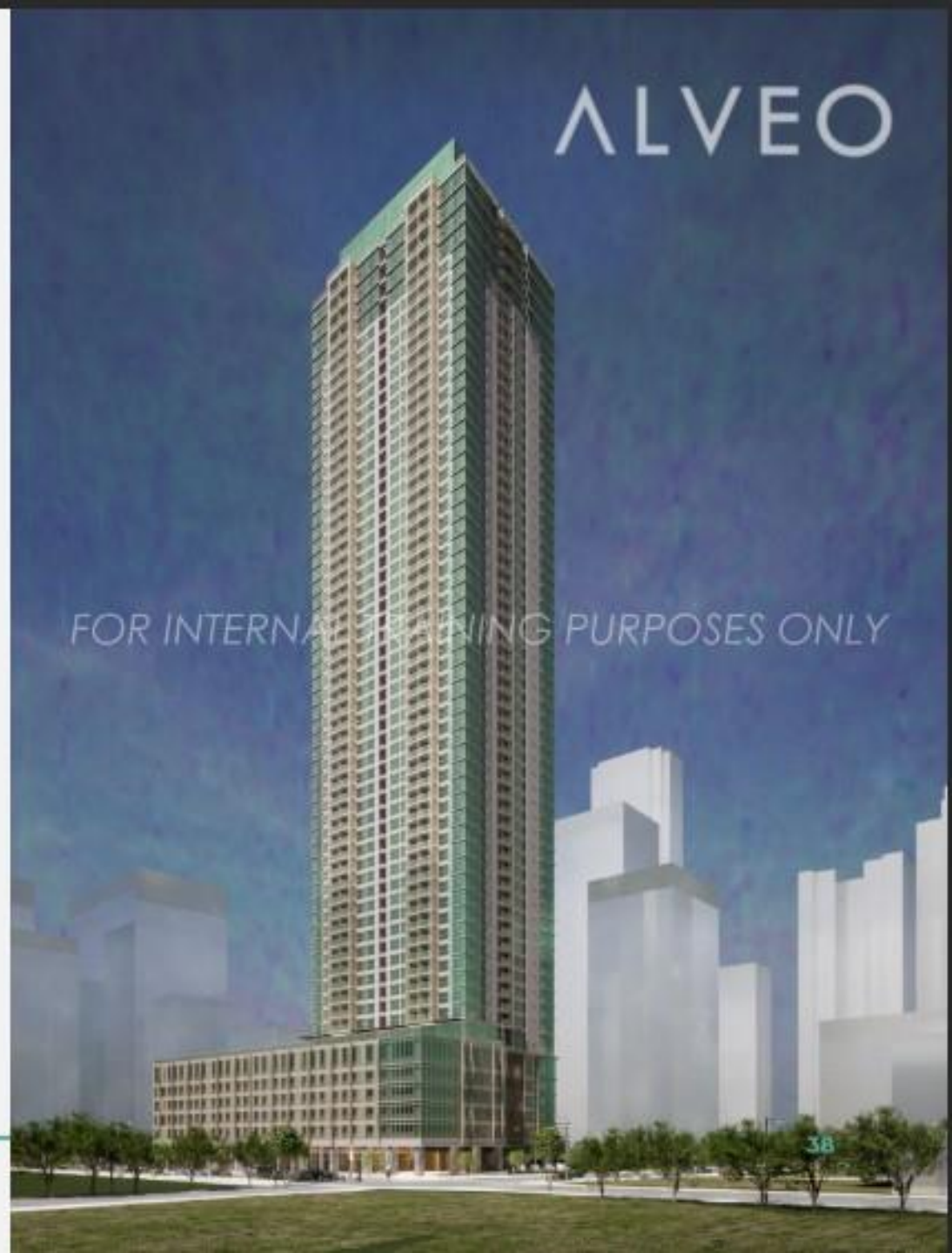
Park East Place

Alveo's latest BGC address offers a refined living experience in BGC's main avenue

- Strategically located in a revitalized sub-neighborhood at the prominent crossroads of 32nd street's corporate row and 9th avenue lifestyle corridor.
- Premium and elegant architecture that create a distinct character
- An exclusive mix of thoughtfully-designed units with upgraded finishes
- Carefully curated amenities to complement an unmatched residential setting

ALVEO PARK EAST PLACE

ALVEO



Building Design

A notable facade that makes its mark in the BGC skyline

Park East Place boasts of an **outstanding podium with angled fins, stone columns, decorative aluminum cladding, and a 50% glass ratio**, which is the highest among Alveo's BGC portfolio.

It will also feature a distinct **9-meter glass crown**, a design collaboration between **Aidea**, a leading Filipino architecture and design firm, and foreign consultant **Smith Group**.



FOR INTERNAL TRAINING PURPOSES ONLY

REFINED RESIDENTIAL SETTING

Project Details

Floors	59 Physical Floors
	53 Residential Floors
	1 Roof deck
Parking Floors	3 Basement + 5 Podium
Units	523 units
Parking Slots	± 650
High-Speed Passenger Elevators	4
High-Speed Service Elevators	1
Back-up Power	50% for units
	100% for common areas and retail
Launch	2023



REFINED RESIDENTIAL SETTING

Building Features

- Ground Floor Lobby
- Interior-designed lobbies and select common areas
- 100% emergency load for common areas in case of power outage
- 24-hour Building Security
- Provision for charging for electric vehicles



REFINED RESIDENTIAL SETTING

Retail

Building places that promote social connectivity

Park East Place envisions to create a vibrant and diverse community, offering a welcoming and convenient space **for socializing, shopping, and accessing everyday necessities, all within easy reach.**

This carefully curated selection of offerings will cater to the needs of the residents and visitors alike, **located conveniently just below the residences.**



REFINED RESIDENTIAL SETTING

Ground Floor

Park East Place's interior-designed lobby gives a **classic and timeless feel**, with **curated selection of furniture and art pieces** that exude sophistication.

The used **mix of stone and wood finishes** further enhances the warm and inviting atmosphere, creating a comfortable and relaxing space.

Additionally, the **ground floor lounge** features an impressive and spacious area that doubles as a coworking space for residents and visitors.



FOR INTERNAL TRAINING PURPOSES ONLY



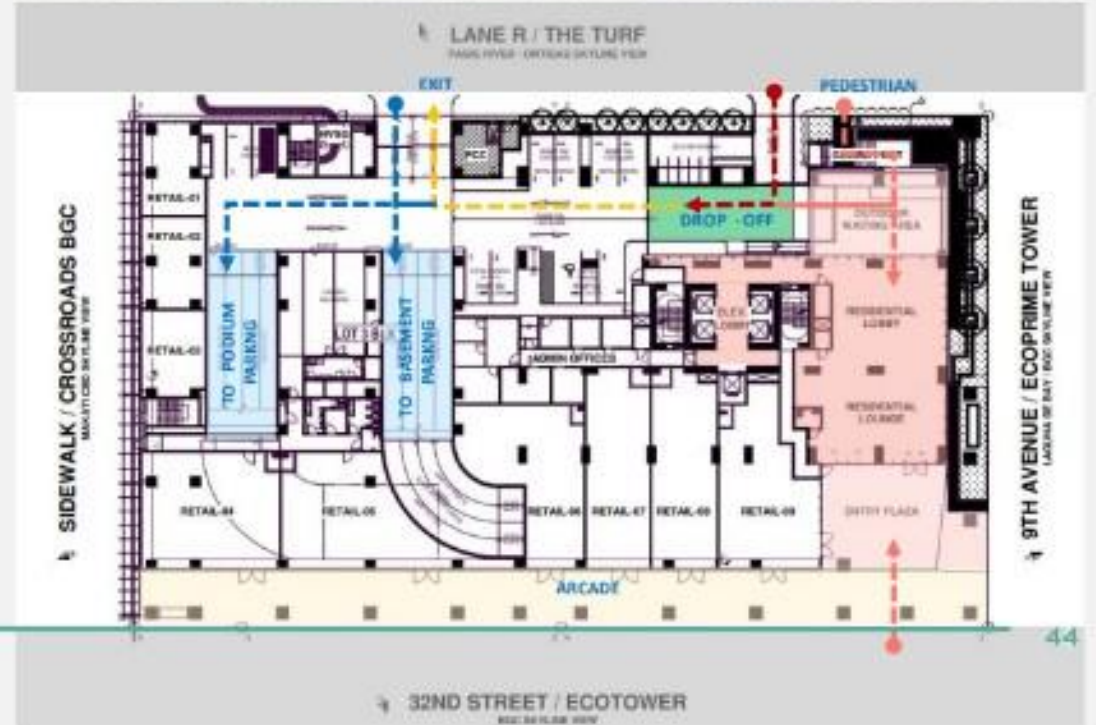
REFINED RESIDENTIAL SETTING

Ground Floor

Park East Place offers an **interior-designed residential lobby**, coupled with an equally sophisticated **designer residential lounge and outdoor waiting area**, that harmonizes with the building aesthetic.

It is accompanied by a **landscaped entry plaza along the 32nd street** giving a direct access to the lobby and retail area.

Drop-off: Along Lane R
Entry Plaza: 32nd Street



ALVEO

FOR INTERNAL TRAINING PURPOSES ONLY

PARK EAST PLACE MAIN DROP-OFF

ARTIST'S PERSPECTIVE

ALVEO

FOR INTERNAL TRAINING PURPOSES ONLY

PARK EAST PLACE MAIN LOBBY

ARTIST'S PERSPECTIVE

AVEO

FOR INTERNAL TRAINING PURPOSES ONLY

PARK EAST PLACE RESIDENTIAL LOUNGE
ARTIST'S PERSPECTIVE

ALVEO

FOR INTERNAL TRAINING PURPOSES ONLY

PARK EAST PLACE OUTDOOR WAITING AREA

ARTIST'S PERSPECTIVE

ALVEO

FOR INTERNAL TRAINING PURPOSES ONLY

PARK EAST PLACE ELEVATOR LOBBY

ARTIST'S PERSPECTIVE

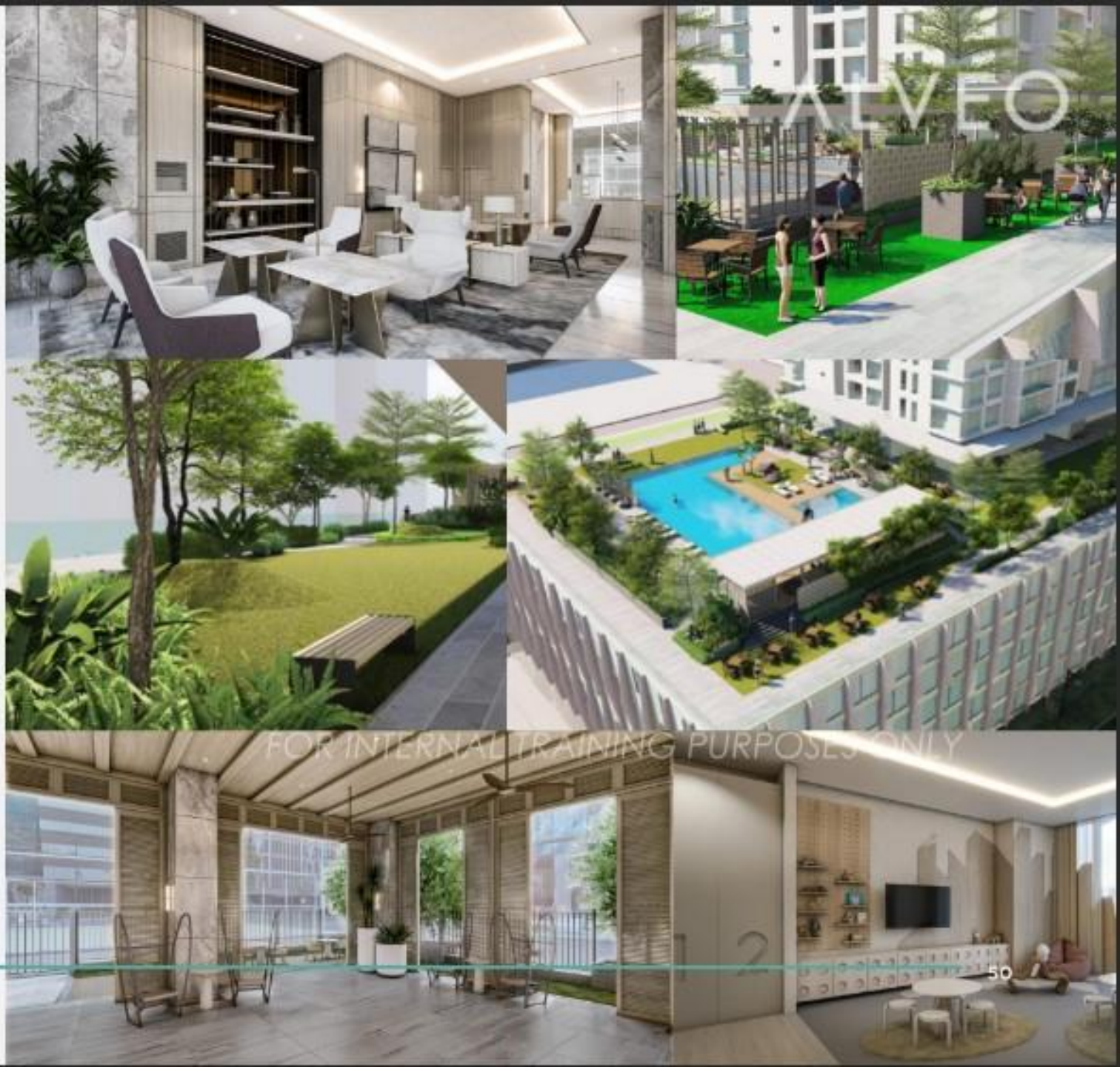
FOR INTERNAL TRAINING PURPOSES ONLY

REFINED RESIDENTIAL SETTING

Prime facilities

Presenting **amenities that complement evolving lifestyles and workstyles**—the perfect atmosphere for BGC urbanites.

Park East Place features **shared spaces that culminates comfort, ease, and class amid such a vitalizing city life.**



FOR INTERNAL TRAINING PURPOSES ONLY

Amenities

Indoor Amenities

- GF Residential Lounge
- 7F Residential Lounge
- Gym
- Function Room
- Indoor Play Area
- Board Room



FOR INTERNAL TRAINING PURPOSES ONLY

ALVEO

FOR PROFESSIONAL TRAINING PURPOSES ONLY

PARK EAST PLACE GYM

ARTIST'S PERSPECTIVE

ALVEO

FOR INTERNAL TRAINING PURPOSES ONLY

PARK EAST PLACE FUNCTION ROOM

ARTIST'S PERSPECTIVE

ALVEO

FOR INTERNAL TRAINING PURPOSES ONLY

1 2

PARK EAST PLACE PLAY AREA
ARTIST'S PERSPECTIVE

ALVEO

FOR INTERNAL TRAINING PURPOSES ONLY

PARK EAST PLACE BOARD ROOM

ARTIST'S PERSPECTIVE

ALVEO

FOR INTERNAL TRAINING PURPOSES ONLY

PARK EAST PLACE BOARD ROOM

ARTIST'S PERSPECTIVE

REFINED RESIDENTIAL SETTING

Multi-functional Amenities

An all-in-one destination of comfort and convenience

The 7F Lounge serves as a **transition area between indoor and outdoor amenities.**

What sets it apart is its interior design, featuring **hand-picked pieces from notable local designers.**



Amenity Deck

Outdoor Amenities

- 25m Lap Pool
- Lounge Pool
- Kiddie Pool
- Pavilion
- Outdoor Play Area



REFINED RESIDENTIAL SETTING

Typical Floor

Typical Floors span from the **8th to the 66th floor (PH)**, with each floor containing a total of 10 units.

Unit Breakdown

	Type	Number of units/floor	Total number of units	
	1BR	2	105	20%
	1BR SUITE	2	105	20%
	2BR	4	208	40%
	3BR	2	105	20%

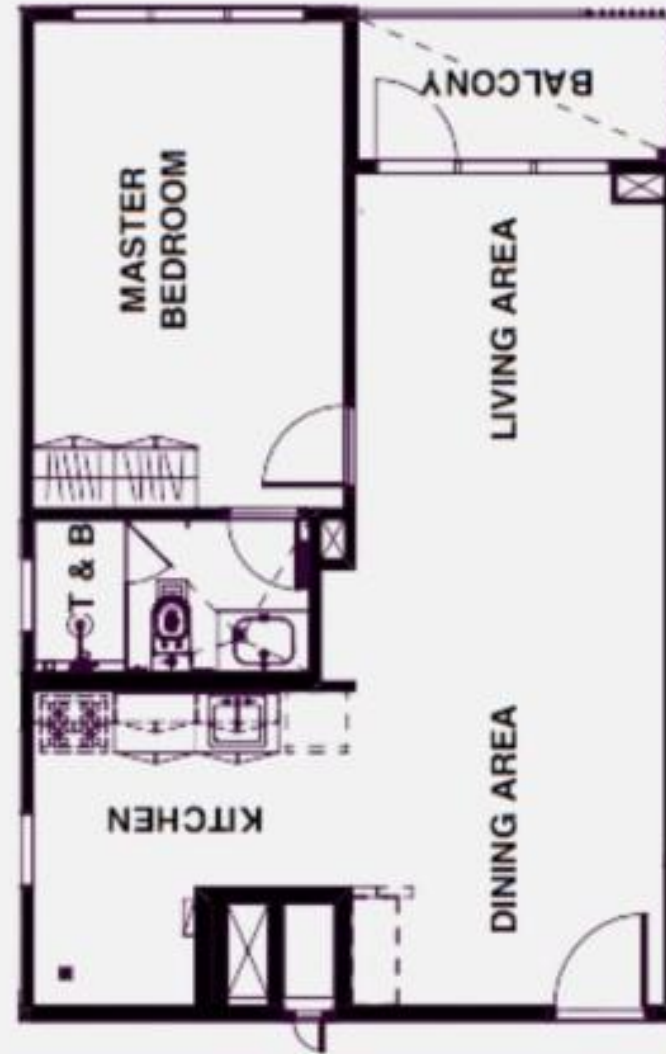


REFINED RESIDENTIAL SETTING

1BR

*Approximate sizes

Areas	sq.m.	sq.ft.
Master Bedroom	15	167
Master T&B	4	50
Living/Dining Area	26	287
Kitchen	8	95
Balcony	4	51
Total Area w/o BALC	55	601
Total Area w/ BALC	60	652

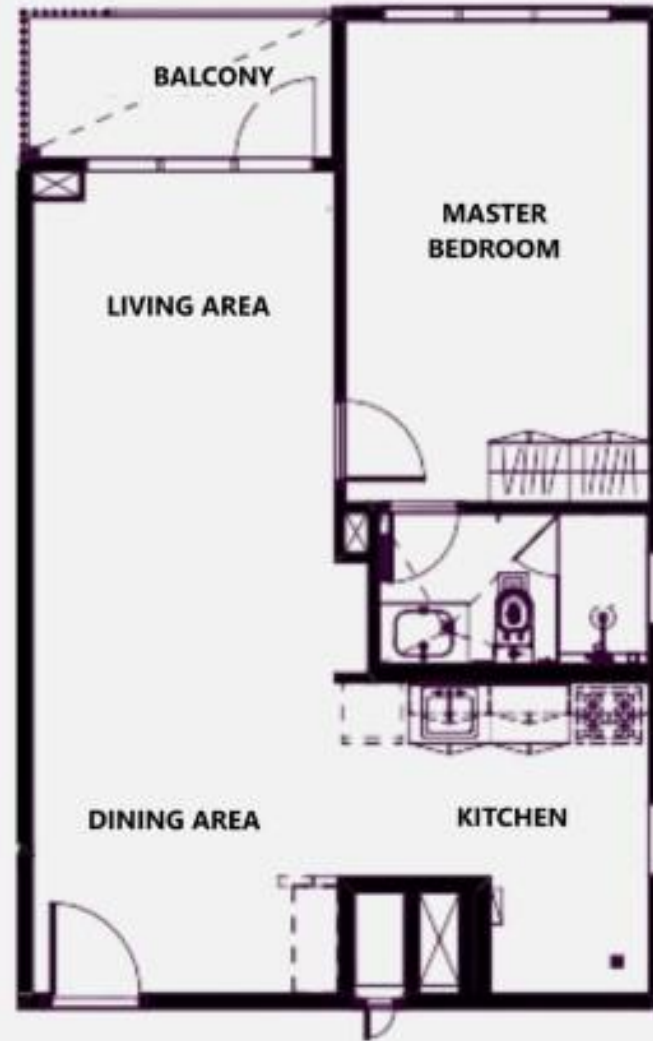


REFINED RESIDENTIAL SETTING

1BR

*Approximate sizes

Areas	sq.m.	sq.ft.
Master Bedroom	15	167
Master T&B	4	50
Living/Dining Area	26	287
Kitchen	8	95
Balcony	4	51
Total Area w/o BALC	55	601
Total Area w/ BALC	60	652



REFINED RESIDENTIAL SETTING

1BR SUITE

*Approximate sizes

Areas	sq.m.	sq.ft.
Master Bedroom	16	181
Master T&B	4	50
Living/Dining Area	32	355
Kitchen	7	78
Balcony	5	57
Total Area w/o BALC	61	666
Total Area w/ BALC	67	723

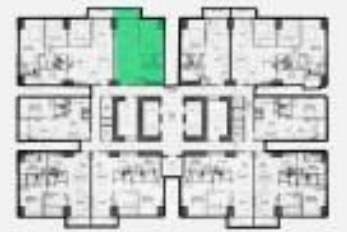
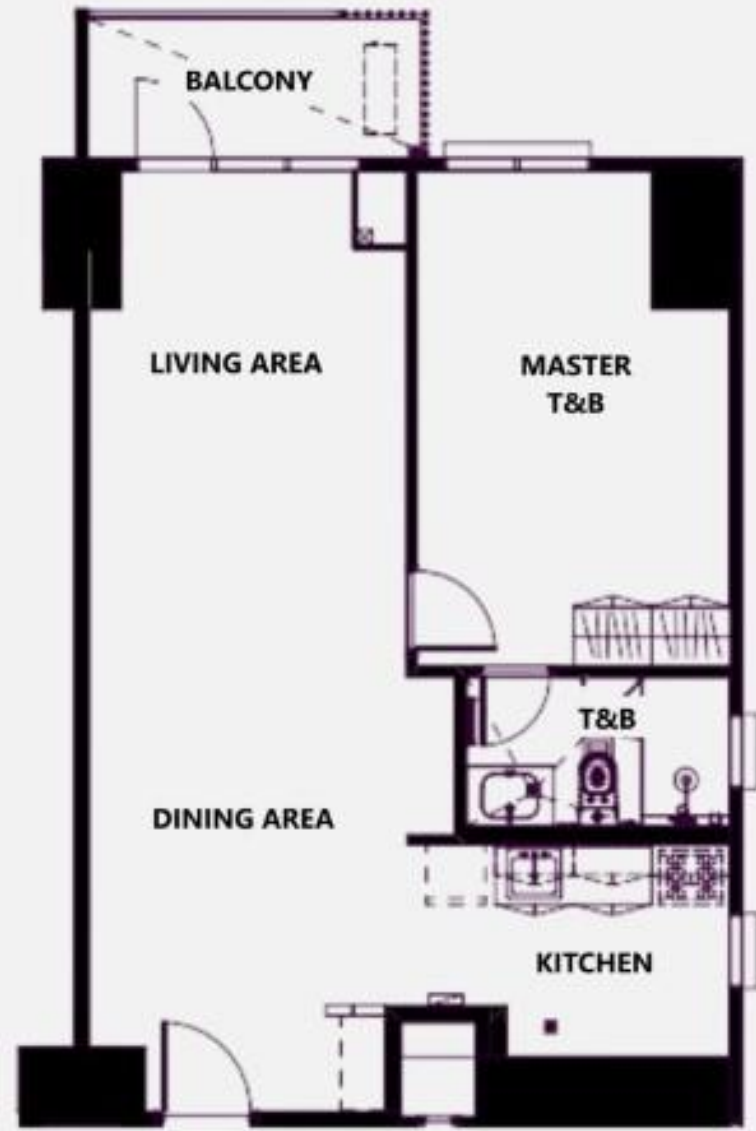


REFINED RESIDENTIAL SETTING

1BR SUITE

*Approximate sizes

Areas	sq.m.	sq.ft.
Master Bedroom	16	181
Master T&B	4	50
Living/Dining Area	32	355
Kitchen	7	78
Balcony	5	57
Total Area w/o BALC	61	666
Total Area w/ BALC	67	723

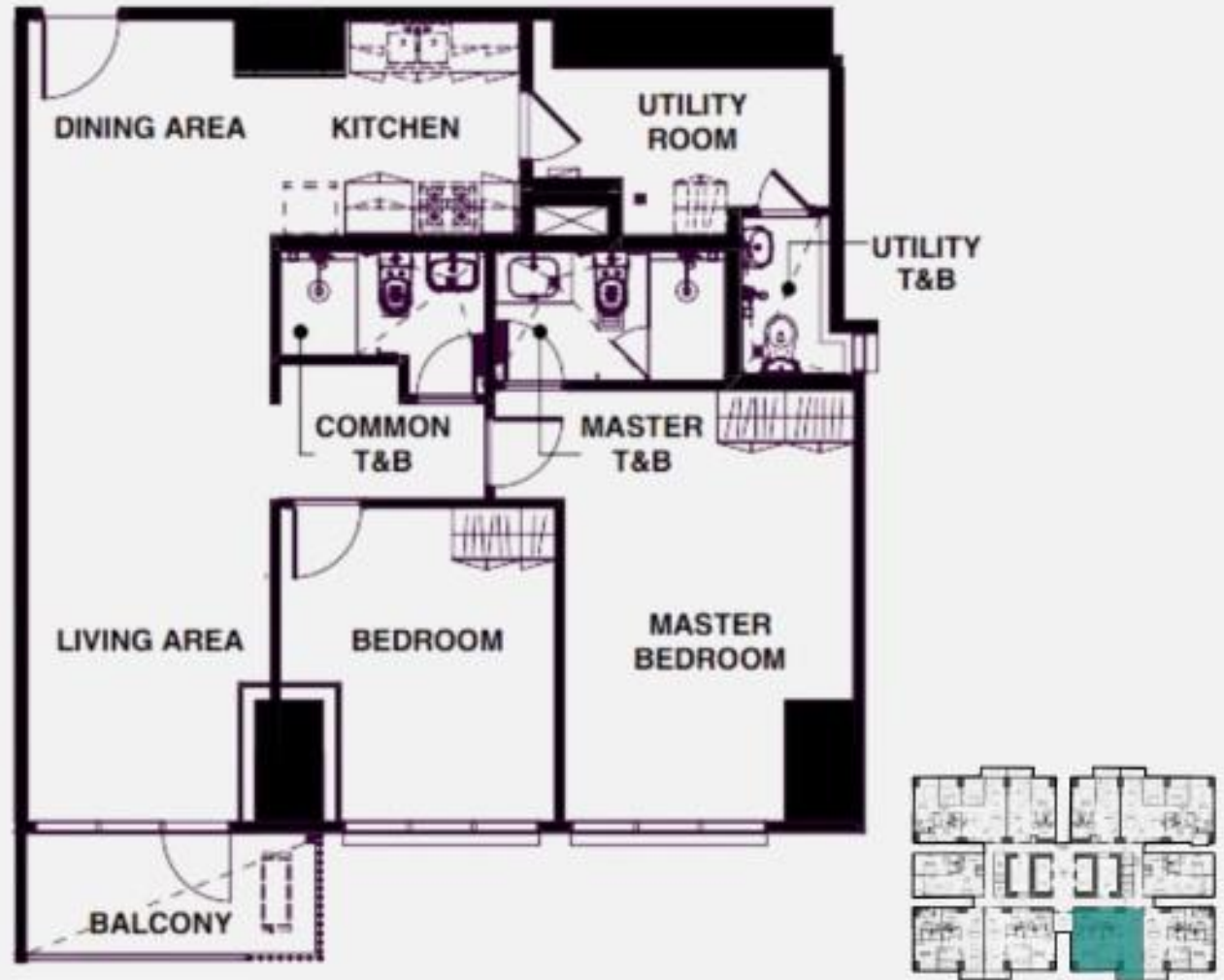


REFINED RESIDENTIAL SETTING

2BR

*Approximate sizes

Areas	sq.m.	sq.ft.
Master Bedroom	19	204
Master T&B	4	51
Bedroom-1	12	133
Common T&B	3	41
Living/Dining Area	27	300
Kitchen	7	82
Utility Room	7	77
Utility T&B	2	25
Hallway	3	39
Balcony	5	57
Total Area w/o BALC	88	957
Total Area w/ BALC	94	1015

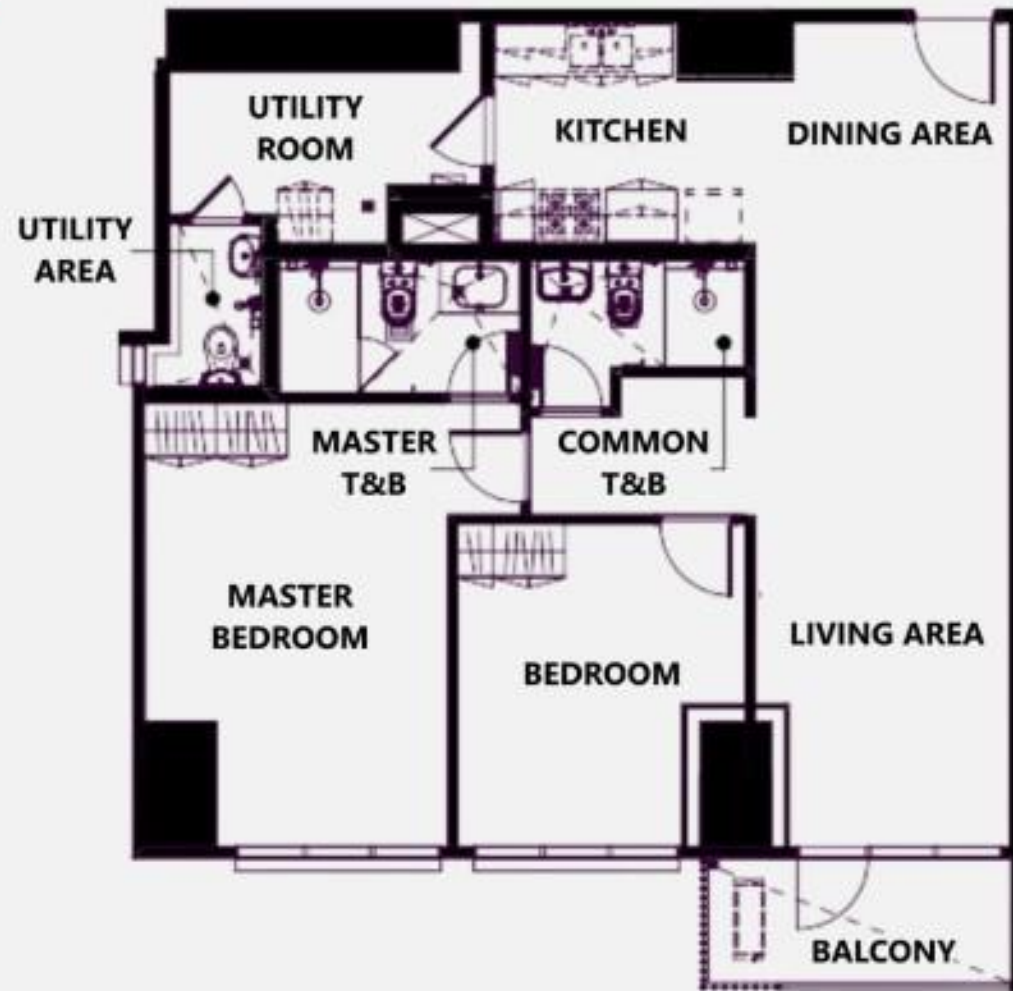


REFINED RESIDENTIAL SETTING

2BR

*Approximate sizes

Areas	sq.m.	sq.ft.
Master Bedroom	19	204
Master T&B	4	51
Bedroom-1	12	133
Common T&B	3	41
Living/Dining Area	27	300
Kitchen	7	82
Utility Room	7	77
Utility T&B	2	25
Hallway	3	39
Balcony	5	57
Total Area w/o BALC	88	957
Total Area w/ BALC	94	1015



REFINED RESIDENTIAL SETTING

2BR

*Approximate sizes

Areas	sq.m.	sq.ft.
Master Bedroom	16	178
Master T&B	4	50
Bedroom-1	10	113
Common T&B	4	44
Living/Dining Area	30	329
Kitchen	7	78
Utility Room	9	106
Utility T&B	2	30
Hallway	3	42
ACCU Room	2	22
Balcony	5	57
Total Area w/o BALC	92	996
Total Area w/ BALC	97	1053



REFINED RESIDENTIAL SETTING

2BR

*Approximate sizes

Areas	sq.m.	sq.ft.
Master Bedroom	16	178
Master T&B	4	50
Bedroom-1	10	113
Common T&B	4	44
Living/Dining Area	30	329
Kitchen	7	78
Utility Room	9	106
Utility T&B	2	30
Hallway	3	42
ACCU Room	2	22
Balcony	5	57
Total Area w/o BALC	92	996
Total Area w/ BALC	97	1053



REFINED RESIDENTIAL SETTING

3BR

*Approximate sizes

Areas	sq.m.	sq.ft.
Master Bedroom	21	235
Master T&B	5	54
Bedroom-1	13	139
Bedroom-2	12	138
Common T&B	5	60
Living/Dining Area	30	324
Kitchen	13	148
Utility Room	8	90
Utility T&B	2	28
Hallway	7	80
ACCU Room	5	56
Balcony	5	57
Total Area w/o BALC	126	1357
Total Area w/ BALC	131	1414

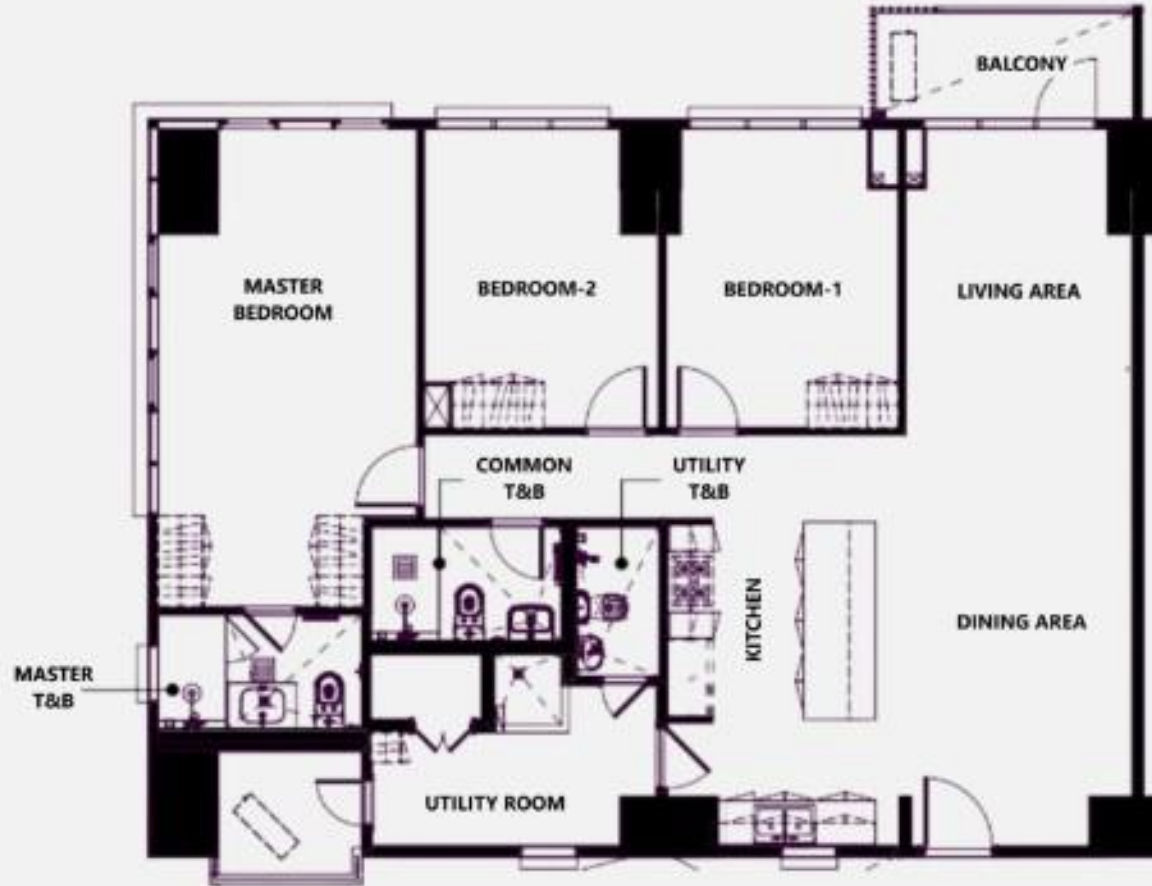


REFINED RESIDENTIAL SETTING

3BR

*Approximate sizes

Areas	sq.m.	sq.ft.
Master Bedroom	21	235
Master T&B	5	54
Bedroom-1	13	139
Bedroom-2	12	138
Common T&B	5	60
Living/Dining Area	30	324
Kitchen	13	148
Utility Room	8	90
Utility T&B	2	28
Hallway	7	80
ACCU Room	5	56
Balcony	5	57
Total Area w/o BALC	126	1357
Total Area w/ BALC	131	1414



Unit Finishes

Quality materials ensure maintenance and long-term upkeep of your investment

	FLOOR	WALL	CEILING
LIVING/DINING/KITCHEN	600x600mm porcelain tiles	Paint finish	Paint finish
BEDROOM	Engineered wood	Paint finish	Paint finish
TOILET & BATH	300x600mm porcelain tiles	300x600mm porcelain tiles	Paint finish
MAID'S/UTILITY	300x300mm ceramic tiles	Paint finish	Paint finish
BALCONY	300x300mm porcelain tiles		Paint finish

OTHER MATERIALS AND FINISHES

Solid Surface kitchen and Master T&B countertops
Laminated wood kitchen cabinets and bedroom closets

Unit Deliverables

Special inclusion of range hood, split-type air conditioning, and water heater elevate the living experience

KITCHEN	Complete Kitchen System (Stone Countertop, Cabinets, and Sink) Waterfall type island counter for 3BR Range Hood
TOILET AND BATH	Kohler Toilet Fixtures (Bathroom Sink, Toilet Bowl, Shower Set, and Facial Mirror) Multi-point Water Heater Shower Enclosure (for Master T&B of 1BR and up only)
BEDROOM	Closet
SAFETY	Fire Detection and Alarm System Audio Guest Annunciator
OTHER	Provision for Telephone Lines Split-type Air Conditioning units for all rooms



FOR INTERNAL TRAINING PURPOSES ONLY

FOR INTERNAL TRAINING PURPOSES ONLY

PARK EAST PLACE

PRIME CENTRAL LIVING IN BGC'S MAIN AVENUE

PRESTIGIOUS BGC ADDRESS
IN A REVITALIZED NEIGHBORHOOD

REFINED RESIDENTIAL SETTING

RARE INVESTMENT OPPORTUNITY

RARE INVESTMENT OPPORTUNITY

BGC Growth

One of the top highest-earning cities in the Philippines



55% developed out
of the whole
240-hectare estate



+ 30 new retail shops
(40 more to open
in 2023)



236 operational buildings
(22 soon to rise)

RARE INVESTMENT OPPORTUNITY

Recent and Future Infrastructure

BGC-Ortigas Link

Reducing travel time between BGC and Ortigas to only 12 minutes

Subway Station

Situated between Market! Market! and Serendra

Transport Hub

To be constructed on the current location of Karport



RARE INVESTMENT OPPORTUNITY

Alveo in BGC



13 Projects
From 2004-2016



Approx 6,100u
delivered



25-year inventory
Sold in 13 years

RARE INVESTMENT OPPORTUNITY

Alveo in BGC

FOR INTERNAL TRAINING PURPOSES ONLY



ALVEO PARK EAST PLACE

RARE INVESTMENT OPPORTUNITY

PROJECT A

- Launch Oct 2021
- 313 units each
- 397k/sqm
- 81% Sold



PARK EAST PLACE

PROJECT C

- Launch Sept 2019
- 285 units each
- 519k/sqm
- 88% Sold

PROJECT B

- Launch Oct 2018
- 452 units each
- 343k/sqm
- 78% Sold

FOR INTERNAL TRAINING PURPOSES ONLY

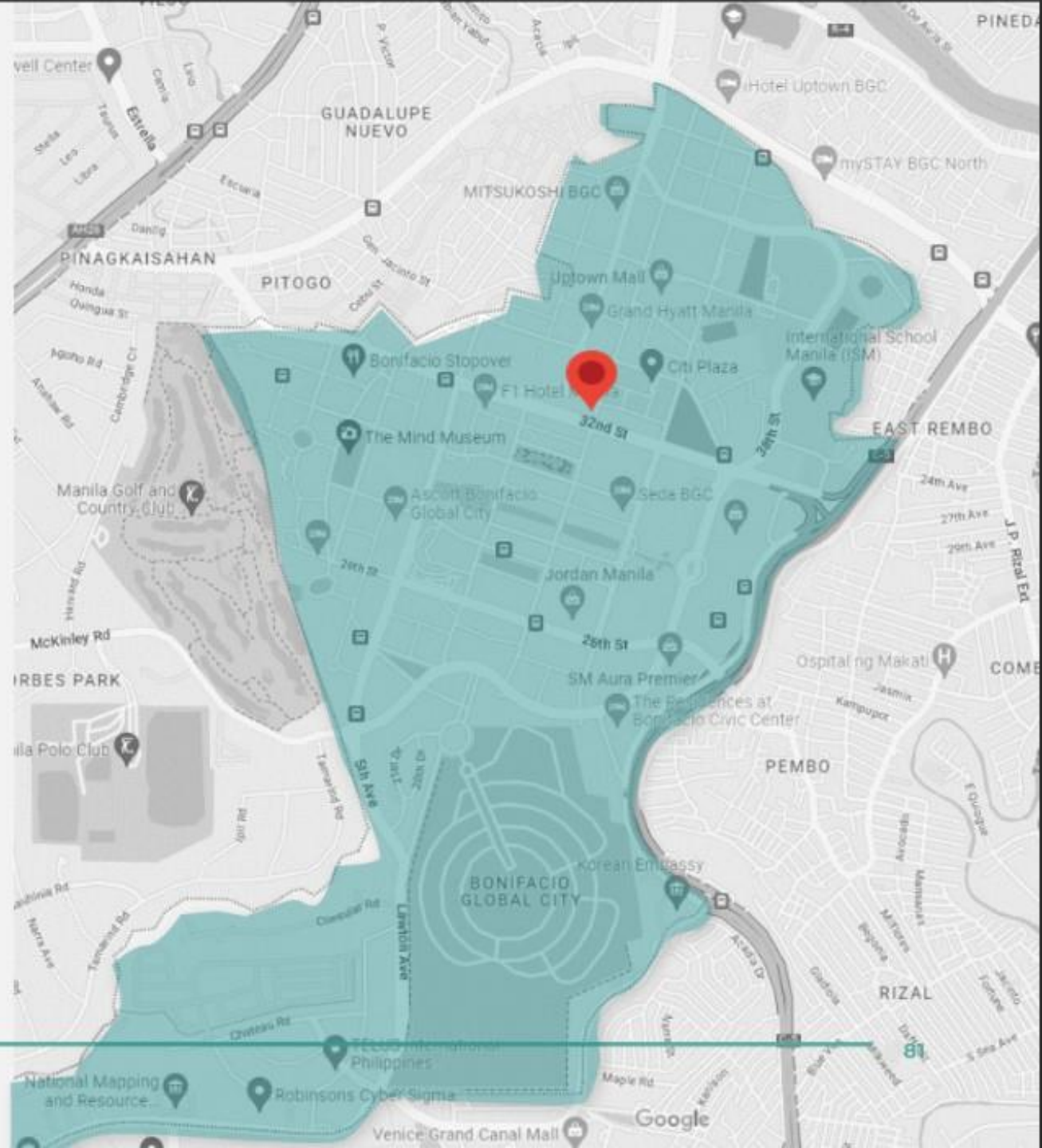
ALVEO IN BGC

Prime Central Living In BGC's Main Avenue

**A rare investment opportunity
to own a prestigious BGC address**

Park East Place is well-positioned to act as the new focal point in one of the fastest growing highly urbanized cities (HUC) in the region. Integrated within the estate masterplan, it will have seamless access to various urban destinations and landmarks.

Alveo's latest BGC address is envisioned to be an iconic tower that will be well-integrated within the city center.





P A R K E A S T P L A C E

ALVEO

BGC, TAGUIG CITY