

# Ammaia Scapes

## Cagayan de Oro

For your future investment, contact 📞:

Rochelle S. Suarez

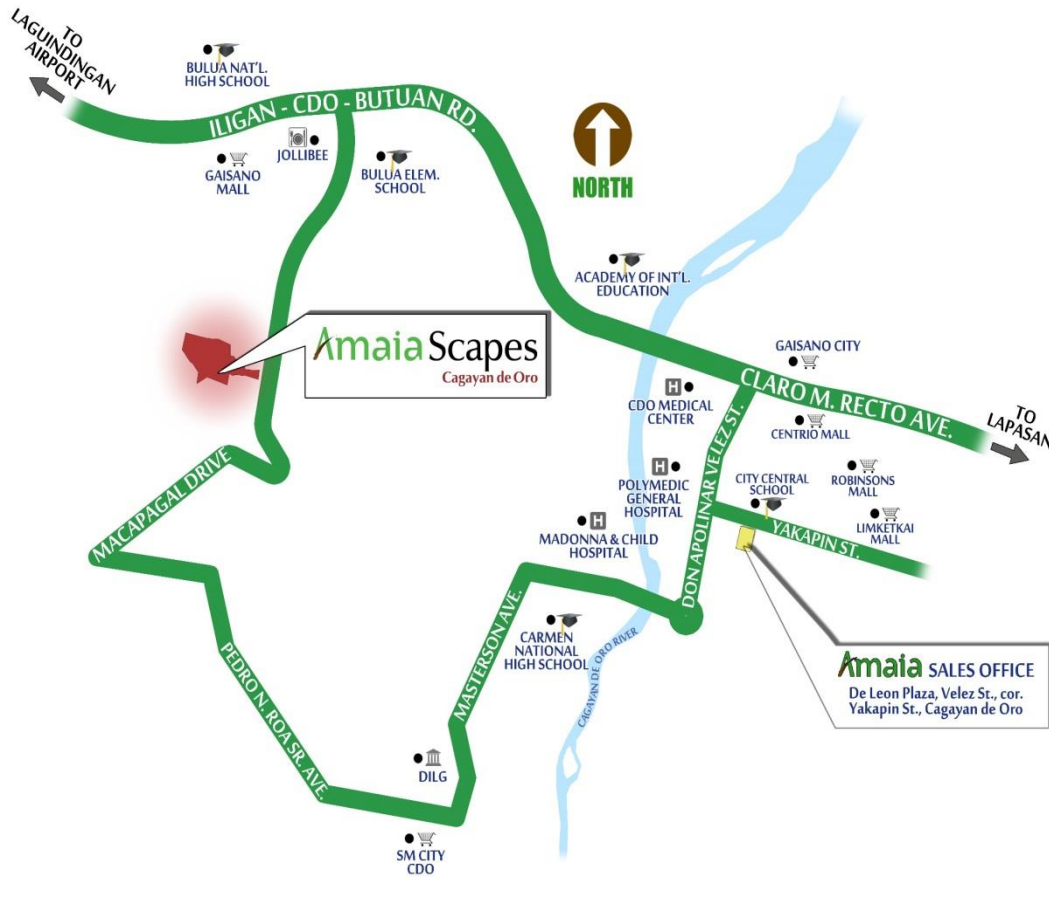
☎️ +63 906 778 9955(Whatsapp/Viber/iMessage/Ph#)

✉️ [suarezrochelle@yahoo.com](mailto:suarezrochelle@yahoo.com)



# Malapit sa Lahat

Location: Brgy. Bulua, Cagayan de Oro City



## Project Specifications:

Land Area:

16.2 Hectares

Saleable Units:

85 units

Price Range:

1M-3M

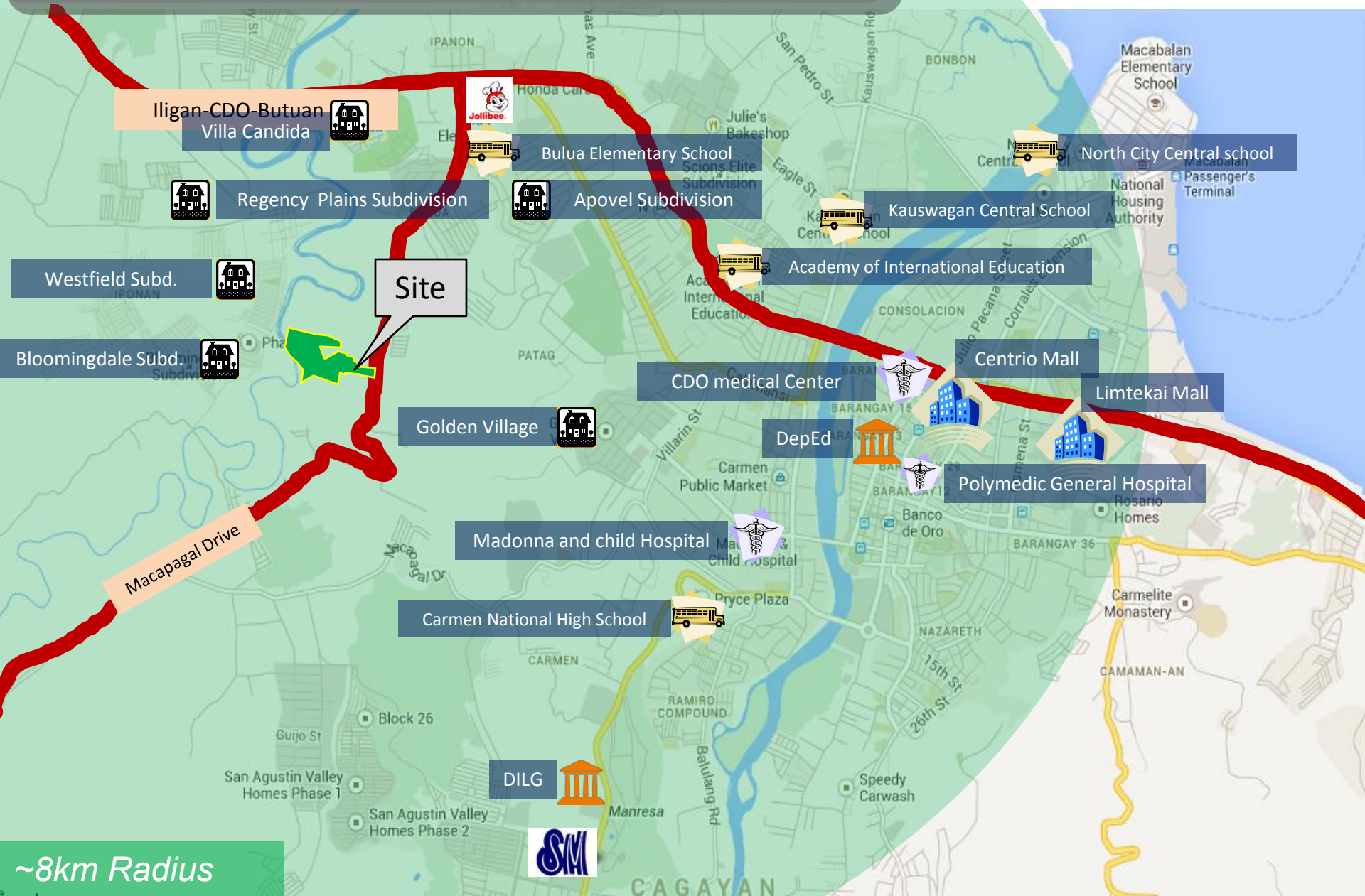
**FOR TRAINING PURPOSES ONLY**

This information is proprietary to Amaia Land Corp.

Any unauthorized reproduction, use or disclosure of this material, or any part thereof, is strictly prohibited

# Location

## Commercial Centers and Residential Projects



~8km Radius





# May Dating

## Village Entrance Conceptual Plan

Guarded Entrance/Exit      Perimeter Fence



*\*Images are not yet final and are subject to change*

**FOR TRAINING PURPOSES ONLY**

This information is proprietary to Amaia Land Corp.

Any unauthorized reproduction, use or disclosure of this material, or any part thereof, is strictly prohibited



# May Dating

## □ Patio Greens

- a pocket park that serves as a gathering and play area for the cluster residents



**FOR TRAINING PURPOSES ONLY**

This information is proprietary to Amaia Land Corp.

Any unauthorized reproduction, use or disclosure of this material, or any part thereof, is strictly prohibited

# May Dating



**FOR TRAINING PURPOSES ONLY**

This information is proprietary to Amaia Land Corp.

Any unauthorized reproduction, use or disclosure of this material, or any part thereof, is strictly prohibited



## Swimming Pool



*\*Images are not yet final and are subject to change*



## Amenities

### FOR TRAINING PURPOSES ONLY

This information is proprietary to Amaia Land Corp.

Any unauthorized reproduction, use or disclosure of this material, or any part thereof, is strictly prohibited



# May Dating

## Basketball Court



*\*Images are not yet final and are subject to change*



## Amenities

### **FOR TRAINING PURPOSES ONLY**

This information is proprietary to Amaia Land Corp.

Any unauthorized reproduction, use or disclosure of this material, or any part thereof, is strictly prohibited



# Amaia Scapes

Cagayan de Oro

## 5 *House Designs*

**FOR TRAINING PURPOSES ONLY**

This information is proprietary to Amaia Land Corp.

Any unauthorized reproduction, use or disclosure of this material, or any part thereof, is strictly prohibited



# May Dating

**Light color Roof and Shell**



**aluminum  
powder  
coated  
sliding  
window**

**Accent Wall**

**Corner Window**

**Metal Pressed Door  
Porch**

**FOR TRAINING PURPOSES ONLY**

This information is proprietary to Amaia Land Corp.

Any unauthorized reproduction, use or disclosure of this material, or any part thereof, is strictly prohibited

# Bungalow Pod



\*suggested floor plan



Indoor Floor Area: 30 sqm

Porch Area: 4 sqm

**Floor Area: 34 sqm**

**Min. Lot Area: 75 sqm**

**FOR TRAINING PURPOSES ONLY**

This information is proprietary to Amaia Land Corp.

Any unauthorized reproduction, use or disclosure of this material, or any part thereof, is strictly prohibited



# Twin Pod

Indoor Floor Area:

25 sqm

Porch Area:

3 sqm

**Floor Area:**

**28 sqm**

**Min. Lot Area:**

**65 sqm**



\*suggested floor plan

**FOR TRAINING PURPOSES ONLY**

This information is proprietary to Amaia Land Corp.

Any unauthorized reproduction, use or disclosure of this material, or any part thereof, is strictly prohibited

# Single Home



GROUND LEVEL PLAN

\*suggested floor plans



SECOND LEVEL PLAN

Indoor G/F Area: 30 sqm  
Indoor 2/F Area: 22 sqm  
Porch Area: 4 sqm  
**Floor Area: 56 sqm**  
**Min. Lot Area: 75 sqm**

**FOR TRAINING PURPOSES ONLY**

This information is proprietary to Amaia Land Corp.

Any unauthorized reproduction, use or disclosure of this material, or any part thereof, is strictly prohibited



# Twin Home



Indoor G/F Area: 25 sqm  
Indoor 2/F Area : 19 sqm  
Porch Area : 3 sqm  
**Floor Area : 47 sqm**  
**Min. Lot Area : 65 sqm**

**FOR TRAINING PURPOSES ONLY**

This information is proprietary to Amaia Land Corp.

Any unauthorized reproduction, use or disclosure of this material, or any part thereof, is strictly prohibited

\*suggested floor plans



GROUND LEVEL PLAN



SECOND LEVEL PLAN

# Carriage Pod



\*suggested floor plans

**Floor Area: 55 sqm Min. Lot Area: 75 sqm**

**FOR TRAINING PURPOSES ONLY**

This information is proprietary to Amaia Land Corp.

Any unauthorized reproduction, use or disclosure of this material, or any part thereof, is strictly prohibited



# De Kalidad



- Combined expertise and experience of **Amaia's Construction Management Team & Makati Development Corp. (MDC)**

- **Load bearing blocks** that can withstand at least 1000 psi

- Offers **1 year Workmanship Warranty**

- Units will be delivered in **BARE FINISH** to maximize design flexibility



**FOR TRAINING PURPOSES ONLY**

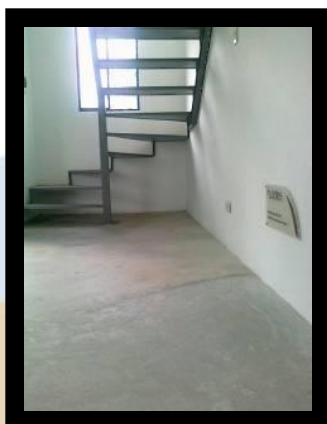
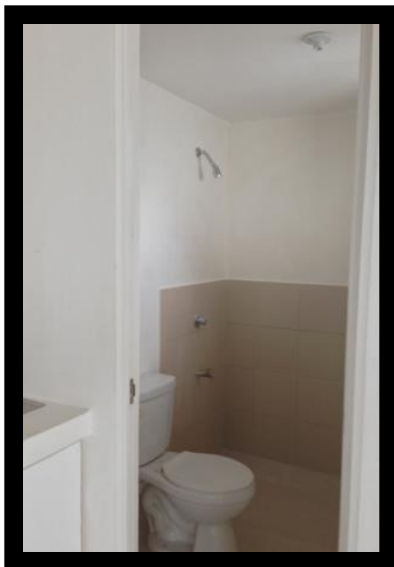
This information is proprietary to Amaia Land Corp.

Any unauthorized reproduction, use or disclosure of this material, or any part thereof, is strictly prohibited

# De Kalidad

Amaia

SALES  
TRAINING  
TEAM



**FOR TRAINING PURPOSES ONLY**

This information is proprietary to Amaia Land Corp.

Any unauthorized reproduction, use or disclosure of this material, or any part thereof, is strictly prohibited



# Napakadali

## BANK FINANCING



## SPOT CASH

w/in 30 days or w/in RS month  
to enjoy the highest discount

## DEFERRED CASH

24mos @ 0%

## INHOUSE

5 yrs @ 12%

10 yrs @ 13%

- **20-80 scheme**  
**(for selected projects only)**



**FOR TRAINING PURPOSES ONLY**

This information is proprietary to Amaia Land Corp.

Any unauthorized reproduction, use or disclosure of this material, or any part thereof, is strictly prohibited

# Napakadali



- *Knowledgeable and accommodating property specialist*
- *Price is easy on the pocket*
- *Available financing options:*
  - Cash, Deferred, Pag-Ibig , Bank and In-house*
- *Sales Office located at – De Leon Plaza, Velez St., cor Yakapin St., Cagayan de Oro*

**FOR TRAINING PURPOSES ONLY**

This information is proprietary to Amaia Land Corp.

Any unauthorized reproduction, use or disclosure of this material, or any part thereof, is strictly prohibited



# Paangat ang Buhay

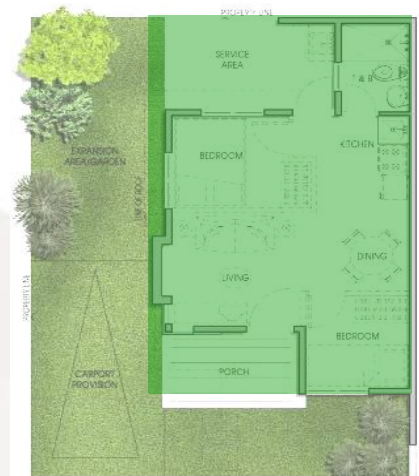
- **Spacious lot cuts ready for expansion**
- **Provides carport for all house models**
- **Invites telephone, cable and internet providers**

**Community to be managed by Ayala Property Management Corporation (APMC)**

**Safe & Secure**



**AYALA PROPERTY MANAGEMENT CORPORATION**



**FOR TRAINING PURPOSES ONLY**

This information is proprietary to Amaia Land Corp.

Any unauthorized reproduction, use or disclosure of this material, or any part thereof, is strictly prohibited